



ATLA NEWSLETTER

Association 1
 Events.....3
 Features 7
 Member News 8
 Programs and Projects9
 Products 10

This is the PDF version of the ATLA *Newsletter*. Please visit the ATLA *Newsletter* (newsletter.atla.com) for the latest content.

From the President Still in Transition



*Submitted by Kelly Campbell,
ATLA President*

As I am working on the Board’s February meeting agenda, I am struck again by how ATLA is in the middle of a transition period. During the past two years, the Board spent time outlining a new vision, new purpose, and core values. The Board developed

a strategic plan outlining the strategic goals of ATLA for the next 3-5 years. All of these “new” documents were shared with you, the membership, in a variety of ways. In October, the Board set a one year time limit to update the Organizational Ends (our guiding and broadest vision) by February 2017! So, the majority of our time together will be assessing the current Organizational Ends and hopefully drafting a new set of Organizational Ends. You can find a copy of the current Organizational Ends on the [ATLA website under “About ATLA.”](#)

Another large piece of the Board’s agenda is reviewing an updated revision of ATLA’s Bylaws. You may remember that a couple of years ago, the Bylaws were updated in several ways. Since June, a Board Committee has been hard at work researching Illinois non-profit law (ATLA was founded in Illinois, so ATLA is required to follow these laws), working with the ATLA lawyer, and drafting a new revision of the ATLA Bylaws. If approved, you will see the revision in June.

Serving on the Board of ATLA is both an honor and hard work. These two agenda items listed above are necessary and must be maintained regularly to keep ATLA current and meeting the needs of future theological institutions, scholars, educators, and librarians.

From Staff Leadership Well-Being Program



*Submitted by Marie Jacobsen,
Director of Financial Services*

Like many other organizations, ATLA is in the process of developing a well-being program for employees. Well-being is increasingly relevant and a necessary consideration in the workplace. Creating an ATLA well-being initiative that considers the way employees live their lives, perform at

work, and produces a positive outcome that is meaningful, will build a culture that enriches employees and the organization.

There are five common elements of well-being programs that are interrelated and interdependent. The five elements are purpose, social, financial, community, and physical.

The purpose (career) well-being element focuses on the influence that an employee’s career has on their overall well-being. Career well-being concentrates on providing an educational tool that helps employees understand the influence careers have on shaping their identity, purpose, and enjoying what they do every day.

Social well-being examines an individual’s relationship with others. How they socialize and interact with people, how they make friends, and have a sense of belonging. Providing staff with the tools to understand how essential these components are to health, happiness, and even work place productivity will be the focus.

Effectively having control over day-to-day or month-to-month finances, being on track to meet financial goals, and the financial freedom to make choices that allow individuals to enjoy life are components of financial well-being. Navigating financial challenges and goals through diverse approaches and programs is the objective of financial well-being.

Community well-being is a combination of social, economic, environmental, cultural, and political conditions that encourage organizations to participate in innovative activities or programs that enhance community well-being in the workplace. When employees do things for others, they see how they can encourage transformation. This successful transformation

Continued on Page 2

Continued from *From Staff Leadership*

gives them the confidence in their ability to foster change in their community and themselves.

The body must be given the right nutrients, in a balanced diet, with regular exercise to attain physical well-being. Providing employees with the proper educational information on how to be physically healthy is very important and can be significant in dealing with the challenges of everyday life in order to maintain a healthy lifestyle and lead a productive life.

In early spring, employees will be asked to rank the five well-being elements and suggest initiatives that they feel would help make that element successful. ATLA will use this information to develop and initiate a well-being program. Well-being can have a positive impact on every work setting no matter what the type of organization. Consider implementing a well-being program in your own library.

Professional Development Committee Launches Professional Development Needs Survey

Submitted by Jennifer Ulrich, ATLA Professional Development Chair

[The Professional Development Committee](#) (PDC) fosters development of librarians and related information professionals who serve theological and religious studies scholarship and study.

We define the infrastructure needed to deliver professional development opportunities to members throughout the year by:

- determining member needs
- identifying expert resources
- utilizing a variety of methods and delivery mechanisms

In doing so, we facilitate the exchange of ideas and support members at every point in their careers.

This new charge was developed this fall by the PDC during its annual face to face meeting.

In order to determine member needs we are asking you to help us out by [completing the following survey](#). We hope you see this as an opportunity to provide PDC with information which will in turn lead to programming to support the work of the profession.

Thank you for taking time out of your busy schedule to [complete the survey](#).

Theological Librarianship Seeking Editor-in-Chief, Deadline Extended

Submitted by Dan Kolb

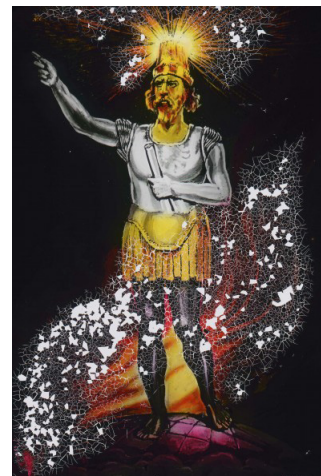
ATLA is seeking applications and nominations for the position of Editor-in-Chief of the ATLA sponsored online journal *Theological Librarianship*. The journal is entering its ninth year of publication.

Responsibilities of the Editor-in-Chief (EIC) include overseeing the selection and work of all Section Editors, personally selecting content and editing one of the sections, and convening and providing the agenda for all editorial board meetings, both those held online and those held in-person. The EIC also coordinates, in conjunction with the Editorial Board, long term planning for the journal and makes recommendations as appropriate to the Director of Member Programs for new initiatives, programmatic changes, editorial stipends, and any other matters relating to the provision of journal content. The EIC reports to the Director of Member Programs and serves a three-year (renewable) term.

The complete notice for the position is posted on the [ATLA Job Board](#).

Anyone wishing to apply or nominate someone for the position should consult application and nomination procedures in the position notice. Applications are due by February 15, 2016.

Digital Spotlight: An Arresting Lantern from Center for Adventist Research



Andy Carter, Digital Projects Manager, spends a lot of time looking through our member's digital collections. There is a wealth of rare and important materials being preserved by ATLA member institutions. He is constantly finding gems and felt compelled to share this arresting lantern slide from Institutional Member Andrews University, James White Library, [Center for Adventist Research](#): King Nebuchadnezzar's vision of a statue in Daniel 2.

He said, "Time has added its own touch to the image."

Several other slides can be found at: <http://www.centerforadventistresearch.org/photos/Lantern%20Slides/>

ATLA Member Product Loyalty Program

ATLA is proud to sponsor the [Member Product Loyalty Program](#), a member benefit designed to recognize and reward our current Institutional, International Institutional, and Affiliate Members who demonstrate their loyalty to ATLA by subscribing to both the *ATLA Religion Database® (ATLA RDB®)* and *ATLASerials® (ATLAS®)*.

ATLA reserves a portion of funds garnered from product sales for distribution to eligible member sites. The Member Loyalty benefit allows members to re-invest in ATLA Member Programs.

2016 Member Loyalty Benefits

- \$400 to apply toward ATLA Annual Conference registration
- May be applied to a maximum of four conference registrations
- Funds are non-transferrable
- Limited funds available on a first come, first serve basis

Eligibility Requirements

- Current Institutional, International Institutional, or Affiliate Member
- Current subscriber to both *ATLA Religion Database® (ATLA RDB®)* and *ATLASerials® (ATLAS®)*

By Thursday March 10, 2016, Member Representatives for eligible members are encouraged to redeem their Member Product Loyalty funds by completing the [Member Product Loyalty Form](#). In order to complete the form, you will need to use your member log-in and be prepared to provide the name and email of up to four conference registrants from your institution who will receive Member Loyalty funds.

Any registrants redeeming Member Loyalty funds must receive their Member Loyalty confirmation email before registering for the ATLA Annual Conference.

If you have any questions, please feel free to contact memberrep@atla.com.

ATLA Annual Conference Travel Grants Available

ATLA is pleased to offer an expanded travel grants program to support attendance at the 2016 ATLA Annual Conference in Long Beach, California, June 15-18. In order to be eligible to apply for an ATLA Travel Grant, you must be a member in good standing as of January 1, 2016. This year, we have revised the monetary amounts that will be awarded.

- \$750 will be awarded to any ATLA Student or Individual Member who receives NO financial assistance from their institution to attend the conference
- \$500 will be awarded to any ATLA Student or Individual Member who receives up to \$250 assistance from their institution to attend the conference
- \$250 will be awarded to any ATLA Student or Individual Member who receives up to \$500 assistance from their institution to attend the conference

Travel grant recipients must register for the conference before Friday, May 15, 2016, are required to stay at the conference hotel, and complete all required paperwork.

[Fill out the Annual Conference Travel Grant Request form](#) to apply. You may apply for a travel grant until Friday, May 2, 2016. Grants will be awarded on a first come, first served basis and there is a limited amount of funds available. Approved recipients will be notified on or before Friday, May 6, 2016.

Events

OCLC Upcoming Webinars and Events

You and your colleagues are invited to a variety of free online events about OCLC products and services as well as trends and best practices in the library community.

Expanding Discovery and Visibility of all Your Library's Collections: A Demo of WorldCat Discovery Services and WMS

Tuesday, June 19, 2016 at 2:00 PM ET

During this one-hour detailed demonstration of WorldCat® Discovery Services, including how they work with WorldShare Management Services, you will

- see how you can provide your end users with single-search access to your library's full array of resources—electronic, print and digital;
- understand how your library can gain more visibility on the Web through OCLC's partnerships with leading search engines and popular sites;
- learn how staff and users can choose from integrated delivery options, including linking to full text through built-in link resolutions and an A to Z list, linking to your OPAC and requesting items via consortial borrowing systems or interlibrary loan; and
- hear how simple these OCLC services are to configure and maintain, and how they build on OCLC services your library already may use.

[Register here.](#)

Additional Webinars:
Connecting with Your Cooperative: An OCLC Update

Thursday, January 28, 2016 at 2:00 PM ET

[Learn More and Register](#)

Where There's a Web, There's a Way

Thursday, February 4, 2016 at 2:00 PM ET

[Learn More and Register](#)

Managing Your E-content Life Cycle: A WorldShare Management Services Overview Demonstration

Thursday, February 11, 2016 at 2:00 PM ET

[Learn More and Register](#)

[Please click here for more webinars.](#)

Winter/Spring Webinars – Professional Development and Vendor Series

We are excited to announce our Winter/Spring webinar schedule. These seven free webinars include professional development topics such as “Succeeding in the Library Job Market,” “Work-Life Balance of Women Leaders in the Association of Theological Schools,” and “Developing a Mutually-Enriching Library Volunteer Program.” Webinars in our Vendor series feature OCLC WMS, ACLS Humanities E-Book, and DeGruyter's Encyclopedia of the Bible and its Reception Online (EBR).

Learn more about each session and register today!

OCLC's WorldShare® Management Services (WMS) Part I

Wednesday, February 17, 1 p.m. – 2 p.m. ET

Currently 31 ATLA members subscribe to WMS as part of several groups. Come learn about the opportunity your library has to be part of an ongoing group purchase of WMS and how your library benefits by joining 15 of 31 ATLA members currently subscribing to the services as part of the ATLA WMS Incentive Program.

During the series you will learn about the following, as well as receive an explanation of how to secure incentive pricing and place an order and hear firsthand accounts from a panel of ATLA librarians on their experiences with WMS. Panelists include:

Tom Phillips, Dean, Claremont School of Theology
 Karl Stutzman, Assistant Director of Digital Library Services, Anabaptist Mennonite Biblical Seminary
 Gary F. Daught, Director of Libraries, P.H. Welshimer Memorial Library & The Seminary Library, Milligan College
 Register here: <https://oclc.webex.com/oclc/onstage/g.php?PRID=017f106e7a358edb50a859128e698f11>

ACLS Humanities E-Book Available Through the ATLA/SCLELC Affiliate Program and Introduction of the ATLA Special Series in Religion and Biblical Studies

Lee Walton, National Academic Library Account Manager, ACLS Humanities E-Books

Tuesday, February 23, 2 p.m. ET

The American Council of Learned Societies has historically had a long and cordial relationship with American Theological Library Association (ATLA), as part of which ACLS Humanities E-Book (HEB) has partnered with ATLA to introduce the ATLA Special Series in Religion and Biblical Studies. This carefully selected collection follows the same high curation rigor that make up the balance of HEB's 4700 titles. The difference being, this new offering will have the additional vetting of ATLA's member scholars.

Humanities E-Book is pleased to announce its participation in the ATLA/SCLELC Affiliate Program with an extremely

Events

advantageous introductory program. Our participation will enable us to offer an increased discount and additional resources to ATLA members who join the ATLA/SCELC Affiliate Program.

Please join ATLA and Humanities E-Book for a webinar on Tuesday, February 23rd 2pm ET where we will discuss some of the resources available in HEB, including the “top hits” in religion titles and some special series of particular interest to ATLA members. Contact Gillian Harrison Cain, 888.665. ATLA, x4415, at gcain@atla.com, for more information and to register for the webinar.

Register here: <https://attendee.gotowebinar.com/register/1396177829605746689>

OCLC's WorldShare® Management Services (WMS) Part II

Wednesday, March 2, 2p.m.-3:30 p.m. ET

Currently 31 ATLA members subscribe to WMS as part of several groups. Come learn about the opportunity your library has to be part of an ongoing group purchase of WMS and how your library benefits by joining 15 of 31 ATLA members currently subscribing to the services as part of the ATLA WMS Incentive Program.

During the series you will learn about the following, as well as receive an explanation of how to secure incentive pricing and place an order. This webinar you will see a demonstration of functionality that's critical to ATLA libraries.

Register here: <https://oclc.webex.com/oclc/onstage/g.php?PRID=017f106e7a358edb50a859128e698f11>

De Gruyter's Encyclopedia of the Bible and its Reception Online (EBR)

Sebastian Fuhrmann, De Gruyter editor for the Encyclopedia of the Bible and its Reception (EBR) Online

DeGruyter

Wednesday, March 16, Noon ET

The Encyclopedia of the Bible and its Reception (EBR) Online offers the first comprehensive encyclopedia of biblical reception. Unprecedented in breadth and scope, with an interdisciplinary, international editorial board, EBR spans biblical reception across Judaism, Christianity, Islam, and other religious traditions. It covers biblical influences on literature, visual arts, music, dance, and film, and contains Hebrew Bible/Old Testament, New Testament, and historical contexts. EBR Online currently includes the first 11 volumes of the printed encyclopedia, with 19 further volumes to be added, c. 1,400 new articles per year. Learn more about the first 10 volumes of the EBR from the Journal of the Bible and its Reception. The EBR Online has non-restrictive DRM and offers perpetual rights for purchased content.

Join Sebastian Fuhrmann, De Gruyter editor for the Encyclopedia of the Bible and its Reception (EBR) Online,

for a demonstration of the functionality and content of the encyclopedia. Also, he will be available to answer any questions you have about the current state and future of EBR. Sebastian is a biblical scholar with a PhD in New Testament from Humboldt University, Berlin, who has worked on the EBR since 2012. The EBR is edited by an international team of scholars.

We encourage you to invite colleagues from related departments to join the webinar. During the webinar, we will also share special pricing for ATLA members for the EBR.

Register here: <https://attendee.gotowebinar.com/register/1930249110012491010>

Succeeding in the Library Job Market Jennifer E. Knievel, Director of Arts & Humanities at the University of Colorado Boulder Wednesday, March 23, 2 p.m. ET

Join us for a webinar with Jennifer E. Knievel, the Director of Arts & Humanities at the University of Colorado Boulder, who will be speaking about succeeding in the academic library job market. Jennifer will describe how to craft excellent resumes and CV's, write great cover letters, ace the interview, and give a standout job talk.

Register here: <https://attendee.gotowebinar.com/register/7773820259619824385>

Work-Life Balance of Women Leaders in Association of Theological School Kelly Campbell, Associate Dean of Information Services and Director of the John Bulow Campbell Library Tues, April 5, 2 p.m. ET

Although women often make up more than 50% of the student population at a theological institution, they are significantly underrepresented in leadership as evidenced by Lowe's 2011 study that found that women account for fewer than 10% of CEOs in theological education. The purpose of this phenomenological study was to examine work-life balance as it relates to organizational commitment for women leaders in Association of Theological Schools (ATS) accredited schools. A questionnaire was sent to women in the specific job positions of President, Academic Dean, Dean, Dean and Vice-President of Academic Affairs, Vice-President of Academic Affairs and Dean of the Faculty as defined by the Association of Theological Schools. Ten women participated in the interviews and provided socio-demographic data.

The findings indicate that these women who participated in this study connect and intermingle their faith with their lives at all levels. Their calling and work are viewed as a part of God's purpose in their lives, and they derive significant meaning from that work. They value professional and personal relationships that help them achieve work-life balance in all areas of their lives. The key findings provided a composite of these women leaders working in Association of Theological Schools. In addition, the research study demonstrated that

Events

both work-life balance and organizational commitment are beneficial for ATS institutions and for women leaders working in the environment.

Register here: <https://attendee.gotowebinar.com/register/3114480307775365890>

Developing a Mutually-Enriching Library Volunteer Program **Rebekah Bedard, Reference Librarian and Outreach Coordinator, Pitts Theology Library** **Tuesday, May 3, 2:00 p.m. ET**

As we seek to improve access to collections and better serve our communities, we often find our time and resources limited. One promising solution is to call upon volunteers. But what resources are there to aid us in doing so? The literature on library volunteers includes a longstanding debate on costs and benefits, and a public-library centric discussion of volunteer programs. There is a need for further research on how academic, and particularly theological, libraries can develop volunteer programs that will benefit both libraries and volunteers.

This webinar will address that gap by exploring the growth of a volunteer and docent program at Pitts Theology Library. To enhance access to special collections, Pitts Theology Library has found an opportunity for further volunteer involvement. Using this example as a case study, Rebekah Bedard, Reference Librarian and Outreach Coordinator at Pitts Theology Library will outline the steps a theological library can take to develop a fruitful volunteer program: (1) planning, (2) recruiting, (3) training, (4) supervising, (5) motivating, and (6) evaluating. We will then analyze the benefits of a volunteer program. Finally, we will explore resources that theological libraries large and small can use to develop their own mutually enriching volunteer programs.

Register here: <https://attendee.gotowebinar.com/register/5736160231047455746>

ATLA 2015 Salary and Benefits Survey Report Now Available

Submitted by Adam Paradis and Judy Schroeter

The *ATLA 2015 Salary and Benefits Survey* is an update of the survey conducted in 2009, with the goal of providing members current information about the salaries of library personnel with different job functions such as Administration, Circulation/Access Services, and Technical Services in peer institutions. There were 112 respondents to the survey, most of which were library directors, who represented a broad cross-section of ATLA Institutional and Affiliate members in all four regions of the U.S. and Canada (although this geographic area was underrepresented in the sample) and a mix of institution types and sizes.

In addition to the results of the member survey, this report includes an environmental scan of broader employment compensation in libraries using available information from sources such as Library Journal, the US Bureau of Labor Statistics, and the AFL-CIO. This scan provides information on the salaries and benefits of staff employed in libraries as well as additional details on the impact of race, ethnicity and gender on compensation.

Using advanced statistical significance testing techniques, comparative analyses were performed that identified a number of notable differences in professional librarian average salary levels based on librarian job function and specific attributes of the institution. Those factors found to be predictive of significantly higher professional librarian salaries include:

- The Administration and Systems job functions, with the highest average librarian salaries of any other function area.
- Library budget in the highest range (\$700,000+), with significantly lower salaries in the budget ranges below \$700,000. The largest differences are shown for the Administration, Circulation/Access Services and Electronic Resources/Digital Content development function categories.
- Graduate institution-affiliated divinity schools and Master's or PhD granting institutions compared to smaller institution types with an especial impact on Systems area professional librarian salaries.
- The Western region of the U.S., where professional librarian salaries are higher than in at least one other region for five of the eight specified job function categories.

Notably, comparison of the survey findings with the previous survey found no significant differences for either professional librarian or paraprofessional salaries in any of the job function categories – essentially flat growth in salary and wage rates between 2009 and the current period.

Other significant conclusions include:

- Over 50% of respondents' professional librarian staff has additional responsibilities outside the library including academic classroom teaching, student assessment, and academic student advising.
- 19% of library directors have responsibility for developing and managing technology resources such as IT infrastructure, learning management systems, or educational technology resources.
- The student worker average hourly rate ranged from \$9.20 to \$9.42 per hour for institutions of all types and sizes.

Findings of note with regard to respondent institutions' benefits offerings include:

- A significantly higher percentage of institutions offer PPO plans for health insurance than in 2009 (71% vs. 58%).
- Widespread offering of flexible spending accounts, offered by 65% of respondent institutions.
- Significant growth in the percentage of institutions offering defined contribution or related types of retirement savings plans than in 2009, such as 401(k)'s (42% vs. 22%) and 403(b) tax sheltered annuities (51% vs. 39%).

[Download the complete report](#) for further analysis as well as numerous charts and graphs.

Member News

New Member: Puritan Reformed Theological Seminary

Please join us in welcoming our new member to the American Theological Library Association:

Institutional Member [Puritan Reformed Theological Seminary](#), Grand Rapids, MI

Since its inception, the PRTS Library has grown from the personal collection of President Beeke's several thousand books and other resources, to its present state of approximately 65,000 volumes. The library focuses, as one might expect, on Puritan and Reformed theology, with the Puritan Research Center as its centerpiece. [Learn more.](#)

Michelle Spomer Named Library Director

Michelle Spomer was appointed the director of the Clifford E. Barbour Library at Pittsburgh Theological Seminary, effective Feb. 15, 2016.

"Michelle Spomer's experience in both university and seminary libraries, her deep commitment to theological librarianship, and her collegial leadership style make her an outstanding candidate. I am delighted that she has accepted our invitation to be the next director of Barbour Library," said David Esterline, president and professor of cross-cultural theological education at Pittsburgh Theological Seminary.

Spomer currently serves as head of Stamps Library at Azusa Pacific University. She has worked there since 2005 in a variety of roles including associate professor of theological bibliography and research.

She has served as chairs on the Conference Committee and the College and University Interest Group.

[Read more from Pittsburgh Theological Seminary.](#)

Bridwell Library Offers 6 Fellowships

Submitted by Roberta Schaafsma, Bridwell Library

Bridwell Library is accepting applications for the 2016-2017 [Visiting Scholars and Ministers Fellowships program](#). This year we are offering six two-week fellowships with a \$2,000 stipend.

The stipend is meant to help defray research, living, and travel expenses during the tenure of the award and preference is given to applicants from areas outside the Dallas/Fort Worth metroplex. The program is open to all active scholars from Ph.D. students to retired professors, and to religious leaders of all faiths.

If you know of persons who might benefit from this program please encourage them to [go to our website where full information on the program may be found](#).

The deadline for applications is March 1, 2016.

ATLA Job Board

- ATLA, Chicago, IL, is looking for an [Editor-in-Chief, Theological Librarianship](#).
- Claremont School of Theology, Claremont, CA, is looking for a [Acquisitions and Collection Management Librarian](#).
- Princeton Theological Seminary, Princeton, NJ, is looking for [James Lenox Librarian](#).
- Trinity International University, The Rolfing Memorial Library, Deerfield, IL, is looking for a [Theological Librarian](#).
- Trinity Lutheran Seminary, Columbus, OH, is looking for a [Director of Library Services](#).

Programs and Projects

Are You Budgeting for the New Fiscal Year in July 2016?

Submitted by Donna Campbell, Westminster Theological Seminary

The successful pilot phase of the Theological Libraries E-Book Lending Project will draw to a close in June 2016. As you may know from various e-mail distribution lists, we are seeking additional libraries to join us in this opportunity to buy and lend religious and theological e-books on our shared OdiloTID platform at <http://www.theologicalebooks.org>.

Why join this e-book platform?

- Share resources with other libraries
- Attract publishers not represented elsewhere
- Discounts on e-book titles
- Migration

Be aware that the reduced fees for the 3-year commitment are the result of a special negotiation for this round of theological libraries and may not be available to the next round of newcomers.

Depending on the number of new sign-ons, the fees could actually be lower. The final number is anticipated in April/May 2016.

Correction to the previously-released fee schedule and FAQ: Please note that the annual checkout fee with 1-year commitment was omitted. This fee is identical to the annual platform fee with 1-year commitment.

If you are making plans to join the platform or have additional questions, please contact Donna R. Campbell: dcampbell@wts.edu.

We welcome you to join us to increase the lending collection and continue to attract more publishers.

ATLA Creates New WMS Discussion List

Due to expressed interest, ATLA has created a new discussion list for OCLC'S Worldshare Management Systems users.

The purpose of this list is to discuss use of OCLC'S WMS.

We hope this listserv will aid you in your many discussions.

To subscribe to the WMS Discussion List please email memberrep@atla.com.

For a full list of ATLA hosted discussion groups, [please click here](#).

ATLA Awards Scholarship to Connie Song

[The Committee for Diversity, Equity, and Inclusion](#) is pleased to announce a recipient of the Scholarship for a Theological Librarianship Course, Connie Song.

Connie is working toward her Masters of Theology at the Athenaeum of Ohio.

She attended the 2000 and 2014 ATLA conferences and at both she noticed the lack of Asian representation, especially in the Roman Catholic group. She explained, "If attendance at the conference is any indication of the ethnic and racial makeup of theological librarians in the field and those about to enter, I believe that my differentness itself will add diversity to the Theological Librarianship course. I have often been the only immigrant, Asian American, or Catholic in many situations around me. Those life experiences bring a different focus or perspective vis-à-vis my cohorts. I also believe that all who take the course will add a diversity of experiences from which I hope to learn."

She continued, "Eventually, I hope to contribute by writing or presenting or serving the profession in other ways. With my fellow librarians, I hope to discern and create ways in which the truth contained in all our stories can be discovered, preserved, and shared."

Connie is an Individual Member and will use her scholarship to support her enrollment in a Theological Librarianship course.

A special thank you to the generous ATLA Members who donated to the [ATLA Scholarships and Grants Annual Fund](#) and made this scholarship possible.

A History of Partnership: The Parliament of the World's Religions and ATLA

EBSCOpost recently published, "[Religious Tolerance: The Parliament of World Religions 1893-2015](#)" an article on the history of the World Parliament of Religions (WPR) and its impact on our Historical Monograph Collection.

"That first WPR had such a profound effect on religion-related literature that subject specialists at the American Theological Library Association (ATLA) use it as the defining year to split their Historical Monograph Collection, which is offered as a digital historical archive through EBSCO. While ATLA Series 1, from Late 13th Century-1893, largely explores other religions from a missionary's point of view, Series 2, 1894-1922, shows a vast expansion of interest in religions and cultures from around the world from a more objective point of view. What happened at the first WPR to cause such a shift in worldview?"

[Read the full post here](#) to find out the answer.

ATLA and Odyssey Networks Announce Content Partnership

In November, The American Theological Library Association (ATLA) announced our partnership with Odyssey Networks.

In case you missed the news, through this new partnership, users of the *ATLA Religion Database*® will be able to find links to selected key videos from [Odyssey's ON Scripture – The Bible™](#), a multimedia resource for clergy, lay leaders and anyone interested in exploring the relationship between the Bible and our lives today.

Maria Stanton, Director of Production at ATLA commented, "We are thrilled to announce this partnership with Odyssey Networks. By including the links to the short-form videos in our premier database, we continue to expand our breadth and depth of trusted non-print resources."

Nick Stuart, President of Odyssey Networks added "The idea of being able to bring this dynamic video and text resource that shines the insights of Scripture onto the main news issues of the day to thousands more people through partnership with ATLA is so exciting. ATLA's authority and reputation made them the perfect partner to provide a new way for people to get this dynamic combination of video and top biblical scholarship."

[Read the full press release here.](#)

Announcing Additions to ATLA Products – February 2016

The American Theological Library Association (ATLA) is pleased to announce the addition of titles now available in *ATLASerials* (ATLAS®), and *ATLA Religion Database*® (ATLA RDB®).

New full-text titles in ATLAS

- *Theoforum* by Faculté de Théologie, Université Saint-Paul

New indexing titles in ATLA RDB

- *Revue d'études tibétaines* by UMR 8155 (CRCAO) of the CNRS
- *Archive for the Psychology of Religion = Archiv für Religionspsychologie* by Brill

The indexing for the following ATLA RDB title is being restarted after a gap in coverage:

- *Henoch* by Morcelliana

[Read the full press release.](#)