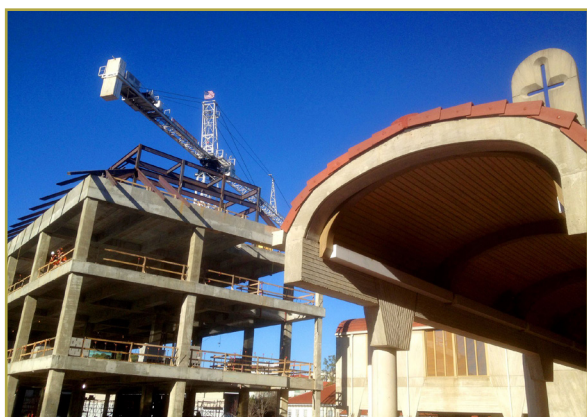


Newsletter



The Pitts Theology Library - Candler School of Theology in Atlanta, Georgia, is in the process of getting a new building.

From the President	1
Individual Dues Increase Proposed	2
ATLA/EBSCO Consortium	2
ATLA/OCLC Consortium	2
ATLA 2012-2013 Annual Report	2
ATLA Annual Conference	3
Future of Libraries Conversation	4
Ten Titles Added to <i>ATLASerials</i> ®	4
Publications Committee Awards Grants	5
ATLA Diversity Scholarships	5
Submit to <i>RIM</i> ®	5
Member Offers	6
2014 ACL Conferenece	7
4th Annual CSIR	7
Member News	8
Job Openings	8
Staff News	8
Calendar	8
From the Executive Director	9



From the President How Theological Education Can Form Leaders

Columbia University Libraries recently held its [11th annual symposium](#): “Leaders Everywhere: Fostering Leadership Across the Academic Library Organization.” It was an engaging day with insights from Elliott Shore, Jerily Veldof, Courtney Young, and a panel of

librarians who lead from the middle. I had the honor of facilitating the closing session, which was a reflective discussion on insights and takeaways from the day. I was asked to facilitate due, in part, to my involvement with ATLA. Prior to and during the event, several of my Columbia University Libraries colleagues joked that they looked forward to my “preaching” and “pastoring” at the end of the day. At the time, I wasn’t quite sure how to take these comments, but I thought it would be a great opportunity to integrate the various talks of the day. However, at that time, I did not fully appreciate the need to take thoughtful notes throughout the entire day and to listen carefully to participants’ discussions during lunch.

I started the closing session by reflecting on how a background in theological studies can be instrumental in the formation of leaders. I then outlined some of the ways that my education and experience had helped me to develop as a leader and decided that seven was a good stopping point. First, my background in biblical studies provided me with various models of leadership. There were central and peripheral prophets in ancient Israel, as there are now. There were also leaders with severe character flaws, as there are now. Many of these examples inspired me, albeit in very different ways. Second, my experience with clinical pastoral education taught me important lessons about emotional intelligence -- lessons that I use on a daily basis in my administrative work. Third, I was trained in the art of reflective practice. Sometimes to my own detriment, I constantly reflect on my actions and their impact, and I reflect on my surroundings and interactions with others. Fourth, seminary training and vocational discernment often creates a heightened level of self-awareness (via all those psychological tests) and an ability to see things from other perspectives (sometimes referred to as “reframing”). Fifth, theological education often includes integrative seminars whereby theory and praxis are brought into dialogue. Sixth, it

Continued on page 2

ATLA / EBSCO Publishing Consortium

ATLA is currently working with EBSCO Publishing on renewal and pricing for the [ATLA / EBSCO Publishing Consortium](#).

This program provides consortium pricing on several EBSCO Publishing databases via EBSCOhost, including *ATLA Religion Database*®, *ATLASerials*®, *ATLA Catholic Periodical and Literature Index*®, *Old Testament Abstracts (OTA)* and *New Testament Abstracts (NTA)*. Institutions that participated in the consortium in 2013-2014 would have received an e-mail in early April. If your institution did not participate in the past and you have questions about eligibility and participation, please contact Kelly Jurecko at kjurecko@atla.com.



ATLA / OCLC Consortium

ATLA is currently working with OCLC on renewal and pricing for the [ATLA / OCLC Consortium](#). The ATLA / OCLC Consortium offers three different FirstSearch options for members. Institutions that participated in the consortium in 2013-2014 will receive in e-mail in mid-April. If your institution did not participate in the past and you have questions about eligibility and participation, please contact Kelly Jurecko at kjurecko@atla.com.



ATLA Annual Report 2012-2013 Available Online

[The American Theological Library Association's \(ATLA\) 2012-2013 Annual Report is now available.](#)

The report highlights the many accomplishments of the Association, including the work of Association's committees and improvements to ATLA's products.

A report from the independent auditing firm McGladrey LLP is also provided, offering an account of the Association's finances at the conclusion of fiscal year 2012-13.

Letter from the President Continued

has been helpful for me to have a theological vocabulary to draw on in times of celebration and crisis and during the moments in between. Finally, my training in research methods has helped me to define and solve problems, to identify and evaluate evidence, and to make decisions and reach conclusions. I could elaborate on each item in my list, and I am sure we could build a much longer list, but I will stop for now.

For many decades, we in ATLA have talked about what it means to be a theological librarian and to do theological librarianship. I hope this conversation continues that tradition. I also hope that I have contributed to it in some small way by asking us to reflect for a moment on how our educations and experiences impact our abilities to be leaders. How does your background enable you to lead from where you are?

Beth Bidlack
President

ATLA to Consider Individual Dues Increase for January 2015 Ballot

Over the past several meetings, the ATLA Board of Directors has spent a significant amount of time discussing how we can sustain the services provided to our members. It should come as no surprise that our association benefits from the revenues derived from ATLA's suite of products. The member dues supplied by ATLA Institutional, Affiliate, Individual, and Student members provide just 15% of the total amount expended to provide the wide range of services throughout our Association. As members, we share in these mutual benefits, including our annual conference, with an affordable and often reduced registration, travel grants, and scholarships for members; a wide range of grants to libraries and individuals; and the work of committees and member initiatives, including our open access journal *Theological Librarianship*.

Even as the range of benefits has expanded, our individual member dues have remained unchanged. While institutional member dues were last raised in 2006, individual and student dues have not been raised for many years. In fact, the last time they were adjusted was in 1998 - and at that time they were actually decreased for a large segment of our members.

The Board of Directors is planning to put forth on our next electronic ballot (January 2015) a motion to raise dues for Individual and Student Members. Later this spring current members will receive a letter outlining the details of the increase. Over the next several months, the Board will engage the membership in a discussion of how we can sustain our Association. In addition to a web site with further information about this proposal, we will be talking about this at our 2014 Annual Conference, as well as at a web meeting and through a series of updates in our *ATLA Newsletter*. We are giving ourselves plenty of time to consider this proposal and we hope that this will be an active dialogue. We appreciate your attention to this issue and look forward to a dialogue about our Association's future. If you have any questions, [please contact us](#).



2014 Annual Conference News

Lanyrd.com

Browse the Conference Schedule

The 2014 ATLA Annual Conference is on Lanyrd. [Feel free to browse the conference schedule and learn more about Lanyrd.](#)

**Register
Now**

Registration Now Open

[Register](#) for the 2014 ATLA Annual Conference.



Reserve Your Room Today!

Discounted room rates are available at The InterContinental New Orleans for \$165 a night. [Reserve your room today.](#)

THATCamp: A Religion & Theology and Technology Unconference in Association with the 2014 ATLA Annual Conference

You are invited to [register](#) for a Religion & Theology and Technology Unconference following the conclusion of the 2014 ATLA Annual Conference, Saturday June 21, 2014, 1:00 p.m. - 6:00 p.m.

[THATCamp Religion & Theology and Technology](#) is open to theology and religious studies librarians as well as religion & theology scholars and students with an active interest in technology's role in our work. The unconference is free to attend and open to both conference and non-conference attendees.

THATCamp stands for "The Humanities and Technology Camp." It is an unconference: an open, inexpensive meeting where humanists and technologists of all skill levels learn and build together in sessions proposed on the spot.

[Learn more](#) and [register today.](#)

THATCAMP
The Humanities and Technology Camp



ATLA Welcomes Ten Titles to *ATLASerials*® (*ATLAS*®)

ATLA is pleased to welcome ten titles that will be available in forthcoming releases of *ATLASerials*® (*ATLAS*®), ATLA's online full-text collection of more than 250 major religion and theology journals. The additions include one ceased title and nine currently published titles.

- *Andover Review*, by Houghton, Mifflin and Co. (ceased)
- *Conversations with the Biblical World*, by Eastern Great Lakes Biblical Society; Midwest Region of the Society of Biblical Literature
- *International Journal of Practical Theology*, by Walter de Gruyter
- *Journal of Biblical and Pneumatological Research*, by Wipf and Stock Publishers
- *Millennium: Jahrbuch zu Kultur und Geschichte des ersten Jahrtausends*, by Walter de Gruyter
- *Neue Zeitschrift für systematische Theologie und Religionsphilosophie*, by Walter de Gruyter
- *Zeitschrift für antikes Christentum*, by Walter de Gruyter
- *Zeitschrift für die alttestamentliche Wissenschaft*, by Walter de Gruyter
- *Zeitschrift für die neutestamentliche Wissenschaft und die Kunde der älteren Kirche*, by Walter de Gruyter
- *Zeitschrift für neuere Theologiegeschichte*, by Walter de Gruyter

Gregg Taylor, ATLA's Licensing Manager, commented, "We are thrilled to begin rolling out content from Walter de Gruyter, which was previously announced. We are also pleased to welcome two additional titles that will strengthen the Biblical Studies content in *ATLAS*, as well as an additional title of historical merit."

Read full press releases for the [November 2013](#) and [April 2014](#) updates.

Discipliana in *ATLASerials*®

Disciples History Magazine is included in *ATLASerials*® (*ATLAS*®) and is a changed title preceded by *Discipliana*.

Twelve Institutions Selected for The Future of Libraries in Theological Education Conversation

Twelve institutions have been selected to participate in [The Future of Libraries in Theological Education: A Conversation with Chief Academic Officers, Information Technology Officers, and Library Directors](#). The program, sponsored by the American Theological Library Association (ATLA) and Association of Theological Schools in the United States and Canada (ATS) will be held as a one-day pre-conference event on Tuesday, June 24, 2014, ahead of the 2014 ATS/COA Biennial Meeting in Pittsburgh, PA.

"Theological education is changing and libraries must change, too," said Brenda Bailey-Hainer, ATLA Executive Director. "This conversation among three key leadership groups provides the opportunity to proactively shape future theological libraries and librarians in ways that will integrate them into the teaching, learning, and research processes of the academy."

The selected institutions are:

- Baptist Missionary Association Theological Seminary
- Chicago Theological Seminary
- Claremont School of Theology
- Columbia Theological Seminary
- Lancaster Theological Seminary
- Lutheran Theological Southern Seminary / Lenoir-Rhyne University

- Nazarene Theological Seminary
- Pittsburgh Theological Seminary
- Princeton Theological Seminary
- Shaw University Divinity School
- St. Charles Borromeo Seminary
- Wesley Theological Seminary

The conversation will be a first step toward understanding the roles of libraries and librarians in theological education as perceived by diverse stakeholders, including academic leaders, information technology officers, and librarians.

Participants will share their perceptions and create a shared vision for the future theological library - including its contribution to curriculum and to scholarly research - in the changing world of theological education. The results of the conversation will be reported out to a broader audience in a session held the following day during the COA Biennial Meeting as well as through official ATLA publication channels.

[Read the full press release.](#)

ATLA Accepting Applications for Scholarships to Promote Diversity in Theological Librarianship

ATLA is pleased to offer two scholarships to help promote diversity in Theological Librarianship.

Scholarship for a Theological Librarianship Course

The American Theological Library Association will provide one scholarship for \$1,200 to a student from an underrepresented population to attend a Theological Librarianship course at any ALA-accredited master's program in library and information studies, including the University of Illinois at Urbana-Champaign's LEEP course, Theological Librarianship (LIS 590TL).

- Applicant must be from an underrepresented population (religious, racial, ethnic, or gender).
- Applicant must be an ATLA member in good standing.

ATLA Diversity Scholarship

The American Theological Library Association will provide one scholarship for \$2,400 to a student from an underrepresented population enrolled in an ALA-accredited master's program in library and information studies.

- Applicant must be from an underrepresented population (religious, racial, ethnic, or gender).
- Applicant must be an ATLA member in good standing.
- Applicant must secure a letter of recommendation from the director of an ATLA Institutional Member library.
- Applicant must enroll and complete at least 6 credit hours in the 12 months following notification.

Applications for both scholarships must be received by May 1 of each year. Applicants will be notified of results by July 1.

Scholarship funds are supplied by generous ATLA members who donate to the Scholarships and Grants Annual Fund. For more information and to support this fund, please visit [the ATLA Scholarships and Grants Annual Fund web page](#).

Special thanks to the ATLA Diversity Committee for their support of this scholarship program.

ATLA Publications Committee Awards Two Research / Publication Grants

The ATLA Publications Committee awarded two [Research / Publication Grants](#) to ATLA members.

Recipients and projects include:

- Melody Layton McMahon, Director of the Paul Bechtold Library, Catholic Theological Union, for her project, "Asian Catholic Seminary Libraries"
- Garrett Trott, Instruction-Reference Librarian, Corban University / Northwest Baptist Seminary, for his project, "Value in Theological Journals"

ATLA wishes to thank Publications Committee members Lisa Gonzalez (chair), Miranda Bennett, and Bradley Ost for their work in reviewing grant applications.

ATLA Research / Publication Grants aid in the development of a scholarly work that advances some aspect of theological librarianship. The purpose of Research / Publication Grants is to facilitate the creation and/or organization of scholarly resources and primary source materials in areas related to theological librarianship. Publications resulting from funded projects are expected to be disseminated through a channel of professional publication, such as a professional journal, a monograph, or a presentation with published proceedings.

Submit to *Research in Ministry*®

This graduation season, please invite your graduating DMin, DMiss, or DEdMin students to submit abstracts for their dissertations and other research projects to ATLA's [Research in Ministry \(RIM®\) database](#).



Graduates in these programs from all ATS-accredited schools are invited to add their scholarship to this important resource in pastoral education.

To submit abstracts of DMin, DMiss, and DEdMin projects from any ATS-accredited school, please go to the [RIM® Submission page](#).

Member Offer: British Online Archives

The American Theological Library Association is pleased to offer a special discount from British Online Archives to provide accessible pricing to ATLA Institutional, International Institutional, and Affiliate Member libraries.

British Online Archives consists of eleven thematic series, each containing individual collections of archival contents. New collections are uploaded to each series as they become available.

ATLA Institutional, Affiliate, and International Institutional Members have access to valuable savings on two series from British Online Archives.

Methodist Periodicals, consisting of Wesleyan and Primitive Methodist periodicals (*The Arminian*, *The Methodist*, *The Wesleyan-Methodist*, *The Primitive*, and *The Aldersgate* magazines) along with several other Methodist-related archives.

Missionary Archives, consisting of materials from eleven collections covering missionary activity from around the world.

Annual, five-year, and perpetual licenses are available. ATLA member institutions are entitled to an automatic 10% discount with additional discount incentives available based on participation.

Free 30-day trials are available to interested member libraries either by IP address range or via User ID and Password. All trials must be requested no later than March 30, 2014.

For pricing and participation information, please visit [the British Online Archives Page](#).

Member Offer: ACLS Humanities E-Book Discount Offer

The American Theological Library Association is pleased to offer a special discount from [ACLS Humanities E-Book \(HEB\)](#) to provide accessible pricing to ATLA Institutional, International Institutional, and Affiliate Member libraries.

ACLS Humanities E-Book (HEB) is an online collection of nearly 4,000 cross-searchable books in the humanities selected by scholars for their continuing importance for research and teaching. These titles are offered by the American Council of Learned Societies in collaboration with over twenty-five learned societies, over 100 contributing publishers, and the MPublishing Division of the University of Michigan Library. The collection features unlimited multi-user access and free, downloadable MARC records. HEB is available 24/7 on- and off-campus through standard web browsers.

"As a school with a broad set of degree programs and research foci, the ACLS Humanities E-Book collection is a stellar resource."
- Evan Boyd, *The Chicago Theological Seminary*

For pricing and participation information, please visit [the ACLS Humanities EBook Consortium page](#).

Member Offer: Maney Publishing Discount for ATLA Member Libraries

ATLA Institutional and Affiliate members are eligible to receive 60% off the full price of the [Maney Publishing Philosophy, Religion and Theology Collection](#).

The collection includes:

- *Black Theology*
- *Comparative and Continental Philosophy*
- *Journal for the Study of Spirituality*
- *Journal of Adult Theological Education*
- *Journal of Chinese Religions*
- *Levant*
- *The Linacre Quarterly*
- *Medieval Mystical Theology*
- *Medieval Sermon Studies*
- *Palestine Exploration Quarterly*
- *Political Theology*
- *Practical Theology*
- *Reformation*
- *Reformation and Renaissance Review*
- *Rural Theology*
- *Theology and Sexuality*

ATLA members are also eligible for 10% discounts on individual journal subscriptions.

Subscription discounts are honored each year with a renewal.

Maney Publishing offers unlimited searching and downloads with no limits on number of end users and no extra charges. Maney Publishing works with LOCKSS, CLOCKSS, and PORTICO.

Each journal subscription includes complete access to archives from year of first publication to current year.

Offers are immediately available to new subscribers. Current subscribers should contact Allan R. Barnett, North American Journals Sales Manager, a.barnett@maneypublishing.com, for more information.

To inquire about pricing, please contact Allan R. Barnett, North American Journals Sales Manager, at a.barnett@maneypublishing.com. Please indicate ATLA membership in your inquiry.

For information on this and other Consortia offers for ATLA Member Libraries, please visit the [Consortia Purchasing page](#).

Member Offer: MinistryMatters.com Free Trial

MinistryMatters.com offers thousands of free articles, videos, books and worship helps as well as a paid online theological reference library. More than thirty top seminaries and universities currently subscribe to MinistryMatters.com and offer their students and faculty online access to resources such as The New Interpreter's Dictionary of the Bible, The New Interpreter's Bible Commentary, Abingdon New and Old Testament Commentaries; a total of over \$8,000 of preaching, teaching, and worship materials. As a benefit of your ATLA membership, you are eligible for a FREE one month trial of MinistryMatters.com - simply add a monthly subscription (\$14.99 value!) to your cart on the site and check out using promo code: ATLA1FMM.



Association of Christian Librarians (ACL) Host E-Publishing Forum with Publishers at 2014 ACL Annual Conference

The Association of Christian Librarians (ACL) annual conference, co-hosted by Grace College & Seminary and Huntington University, is being held at Huntington University, Huntington, Indiana, June 9 – 13, 2014. On Wednesday, June 11, ACL has invited a panel of Evangelical publishers to express librarians' need for quality e-resources, and to listen to their difficulties related to e-publishing. ACL would like to determine what we can do to encourage the publishers to distribute more of their academic publications as e-books, and to allow for more access to these materials. The Association and hosting team would like to invite ATLA members to join ACL on Wednesday to demonstrate the growing need for access both of our associations have for quality e-resources.

If you are interested in attending ACL's meeting please visit the conference website [Crossroads for Discovery](http://CrossroadsforDiscovery.com) and check out the information for the entire week. If you wish to participate in Wednesday only, single day registration includes meetings and presentations, lunch and breaks for ONE DAY ONLY; cost is \$60 per day. Registration for the conference closes on May 10th.

Registration open for 4th Annual International Conference on Information and Religion

Registration is now open for the 2014 Conference on Information and Religion, hosted by the Center for the Study of Information and Religion in the School of Library and Information Science at Kent State University.

This year's theme is Information Management in Religious Organizations, and our keynote speaker is Dr. Kenneth Inskeep, Director, Research and Evaluation, Evangelical Lutheran Church in America, and co-author of *Chasing Down a Rumor: The Death of Mainline Denominations*.

The conference is scheduled for June 5 and 6, 2014, at Kent State University, Kent, Ohio.

For details, including a list of presentations and a link to registration, visit our [website](http://www.csis.kent.edu/conference).

Member News

Job Openings

Are you in the market for a new position? Be sure to check the ATLA [web listings](#) to see who is hiring now.

Positions posted this month:

- American Theological Library Association, Chicago, IL, is looking for a [Lead Metadata Analyst](#).
- American Theological Library Association, Chicago, IL, is looking for a [Metadata Analyst](#).
- Auburn Seminary, New York, NY, is looking for a [Vice President for Applied Research](#).
- Andover Newton Theological School, Newton Centre, MA, is looking for a [Library Co-Director / Public Services Librarian](#).
- Columbia International University, Columbia, SC, is looking for a [Public Services Librarian](#).
- University of Saint Mary of the Lake, Mundelein, IL, is looking for an [Electronic Services Librarian](#).
- Hood Theological Seminary, Salisbury, NC, is looking for a [Learning Commons Librarian](#).

Routine Maintenance Reminder

Routine maintenance will be performed on ATLA systems on Monday, May 5, and Monday, June 2. You may encounter a brief interruption of service between 5:00 and 6:00 p.m. (CDT). Services that will be affected include ASE, listservs, the ATLA website, and member community sections. We apologize for any inconvenience and thank you for your patience.

Staff News

Judy Schroeter Joins ATLA

Judy Schroeter joins ATLA as the Research Assistant in the Business Development Department. Judy has a strong background in market research, communications, and design. She has worked extensively in the not-for-profit sector and with membership associations. Judy will support a range of data analysis and product research initiatives.



ATLA Calendar

April

- 27-30 - ICOLC (International Coalition of Library Consortia), Portland, OR - Brenda Bailey-Hainer attending

May

- 1 - Travel Grants Application Due
- 1 - ATLA Diversity Scholarship Applications Due
- 5- Routine Maintenance Performed on ATLA Systems
- 16 - Early Bird Registration Deadline for ATLA Annual Conference
- 16 - Housing Deadline for ATLA Annual Conference
- 26 - ATLA office closed in observance of Memorial Day
- May 28-30 - Society for Scholarly Publishing 36th Annual Meeting, Boston, MA. Margot Lyon and Maria Stanton attending

June

- 2 - Routine Maintenance Performed on ATLA Systems
- 17- ATLA Board of Directors Meeting, New Orleans, LA
- 18- 21 - ATLA Annual Conference, New Orleans, LA
- 21 - THATCamp: A Religion & Theology and Technology Unconference, New Orleans, LA



From the Executive Director Assuring the Future of Theological Librarianship

Every nonprofit organization strives to maintain a level of financial stability that will enable it to achieve its mission. In the case of associations in particular, this stability can be achieved through revenue from a combination of four primary sources: 1) membership dues, 2) earned income from the

sale of products or services, 3) grants for specific projects, and 4) an endowment that generates income.

Over the last three years, ATLA has been gradually strengthening its financial position. At various times in the past, it relied on grants to fund on-going operations. Now, operations are fully self-funded through the revenue derived from ATLA products; grants are used only for special projects. Members are asked to share the cost of some programs through conference registration fees or fees for professional development programs, which only partially cover the overall cost of the events.

But it is critical that an organization not rely too heavily on any one of the four primary revenue sources. Currently ATLA is vulnerable due to the large proportion of revenue that comes from products and must endeavor to increase the other three revenue streams for a more balanced approach.

Work has already begun to build grant revenue. Last September, ATLA received its first ever IMLS grant to assess the preservation needs of small religious studies libraries and collections. The results of this planning grant will be used to justify a grant proposal for a full blown preservation project later this year.

ATLA's Board of Directors has been discussing a potential membership dues increase for individuals, which would be on the January 2015 electronic ballot. This would be the first dues increase for individuals in decades.

But a much needed fourth pillar of financial sustainability is missing from our portfolio: a robust endowment that generates income. As

of the end of March, the value of ATLA's Endowment Fund was \$378,000. While it has significantly increased in value in the last three years, this amount does not generate enough income to support even a small portion of the association's programs.

At last year's ATLA Annual Conference, the Endowment Committee set a short term goal of increasing the Fund to \$1 million. To help reach this goal, all income from the Fund is being reinvested in it.

In addition, ATLA will be matching, dollar for dollar, all donations made between June 1, 2013, and May 31, 2014, up to a total amount of \$10,000. As of early April, over \$6,500 in donations has been received. ATLA has matched this amount, leaving roughly \$3,500 still available in matching funds.

Generating revenue is not an end in itself, but rather it is necessary to fund the mission of the organization. As your professional association, ATLA coordinates collaborative efforts to gain results that would be impossible for theological libraries to achieve on their own. Whether it is proactively framing the discussion about the future role of theological libraries and librarians in theological education, ensuring that important resources in religious studies are preserved for future scholars, or negotiating group licenses to help reduce costs to individual libraries, ATLA uses its revenue to better theological libraries and librarianship.

[Please join me in making a donation to ATLA's Endowment Fund before May 31 to help make this a record year of contributions.](#) It will help assure the fulfillment of ATLA's mission of enhancing the development of theological and religious studies libraries and librarians, both now and into the future.

Brenda Bailey-Hainer
Executive Director

Contact Information

We welcome your submission of news, photos, and other items of interest for the ATLA *Newsletter*. All submissions are due on the first business day of the month preceding publication.

Contact newsletter@atla.com with any questions or concerns or if you are interested in sponsoring an issue of the newsletter.

Stay Connected

