



Bruce Eldevik, Jennie Bartholomew and Mary Ann Teske enjoying an early spring day outside of the library at Luther Seminary.

Upcoming Board Nominations

Do you know someone who has the skills and dedication necessary to become a successful member of the ATLA Board of Directors? If so, the Nominating Committee for the ATLA Board would appreciate your suggestions. Information on the process and a list of qualifications for board members may be found in the Bylaws of the Association (see Article 4) and the ATLA Board Policy Manual (pp. 29-32). Be sure to review this information (found in the shared documents section of the Members Only web pages at <http://community.atla.com/default.aspx>) before forwarding your suggestions to the committee. There is no need for you to contact the person(s) you are recommending, as committee members will do so if they are interested in selecting this person as a potential candidate. Please send your suggestions by June 1, 2010 to Melody Layton McMahan (mmcmahan@ctu.edu), chair, Ellen Frost (efrost@smu.edu), or H.D. Sandy Ayer (sayer@ambrose.edu).

In This Issue

Upcoming Board Nominations
 2010 Annual Conference
 Local Host Update
 OCLC/ATLA Partnership
 To What End(s)?
 IFLA/OCLC Fellows Visit
 ATLA Member Survey
 Wabash Colloquy
 Member News
 From the Diversity Committee
 From the Executive Director
 Have You Heard?
 From the President
 Remembering Veta Campbell

"You Think You've Got Troubles ..."



The opposite of "inspirational" would be what, "sobering?"

What sets me wondering is my recent perusal of a book that is very sobering indeed, Fernando Baez's *A Universal History of the Destruction of Books, From Ancient Sumer to Modern Iraq* (New York: Atlas & Co., 2008). It reads like a grim narrative of one tragedy after another; I had no idea. (Surgeon General's Warning: *only read small doses.*)

Whatever they are, it's only wise to keep our particular travails as librarians in historical perspective. To read Baez is to realize that any extended period when a library enjoys protected, favored status is the exception. Very bad things have been visited upon libraries, many of them perpetrated, on purpose, by people considered smart and highly civilized in their time.

Grounds for self-pity? Nope, but certainly a rather bracing reminder that the value of libraries and library work are rarely self-evident (how often we are wrong in assuming otherwise) and thus are in constant need of champions and advocates, i.e., people like us. Every time and place calls for its own form of vigilance. It's up to us to know what that is, and how best to exercise it.

Cheers,

David R. Stewart

From the Executive Director



During the five days I was privileged to share with the participants in the third triennial

Colloquy for New Theological Librarians, I found many reasons to be confident about the future of ATLA. On the final evening, the participants shared metaphors depicting how they viewed themselves in their profession. It was a very rich and creative set of metaphors, illustrated through music, drawings, sculpture, dance, mime, material objects, and film clips.

One in particular seemed to me to be capable of portraying the Association as I understand it. It was a line drawing of a tree, both the above ground and underground portions. The participant described the importance of the root structure as the anchor, the history, and the source of nourishment that provides the elements needed for the twigs far above to sprout, to produce new life, and to reach to the future.

After my 15 years here, I feel like part of the root structure, and I was very pleased to see the new life and future orientation of the thirteen remarkable people who participated in the colloquy. I think ATLA will grow taller and stronger in its future.

-Dennis A. Norlin

To register to receive regular Friday updates of my blog, go to http://edblog.atla.com/?page_id=62.

Member News

Library Naming Honors Elmer and Betty O'Brien



United Theological Seminary (UTS) just announced that its library will be named in honor of lifetime ATLA Members Reverend Elmer J. and Mrs. Betty A. O'Brien (left). The O'Briens have made an initial \$500,000 gift commitment with an additional \$100,000 to be raised. Elmer worked at

UTS from 1969 to 1996, and Betty joined the staff in 1986. The UTS press release states that "Elmer was a mentor for students, taught academic research courses, and worked closely with the faculty to obtain materials and resources for their work in the classroom. Betty kept reference materials ordered and assisted in the 'difficult-to-find' articles and references," adding that the O'Briens' influence on the operations of the library is still felt to this day.

"In this naming of the library in their honor, we want to recognize their generosity to the seminary over many years as well as their current commitment," said UTS President Wendy Diechmann Edwards. "They have honored the United community with decades of faithful service, warm friendship, and heartfelt financial support."

The naming ceremony is schedule for September 8, 2010.

Pitts Staff Announcement



Dr. Matthew CollinsThe Pitts Theology Library (Candler School of Theology, Emory University) is pleased to announce that Dr. Matthew Collins (left) has accepted the library's offer to join its reference staff. Dr. Collins holds the Master's in Library and Information Studies (FSU), the PhD in New Testament (Vanderbilt University), and the MDiv (Northern Baptist Theological Seminary) and is ordained in the Christian

Church (Disciples of Christ). From 1997-2009 he worked for the Society of Biblical Literature, where he was Director of Congresses and Professions.

Finlayson Book Published



UNITY & DIVERSITY
THE FOUNDERS OF
THE FREE CHURCH OF SCOTLAND
SANDY FINLAYSON

Christian Focus Publications recently released *Unity And Diversity: The Founders of the Free Church of Scotland* by ATLA member Sandy Finlayson. The book looks at the life and ministry of some of the 'fathers' of the Free Church of Scotland, including a number of the key figures in the Disruption era and late 19th Century Free Church. Sandy is Library Director and Professor of Theological Bibliography at Westminster Theological Seminary in Philadelphia. More information can be found on the publisher's website at <http://www.christianfocus.com>.

Member Article

The Spring 2010 issue of *In Trust Online* features a thoughtful article by Melody Layton McMahon on the future of academic libraries. Entitled "More Than a Study Hall," Melody's piece examines the response of library boards to trends--both actual and anticipated--that are affecting the decisions they make. You can read the article at <http://www.intrust.org/magazine/article.cfm?column=10&id=639>.

Routine Maintenance Reminder

Routine maintenance will be performed on ATLA systems on Monday, June 7, 2010. You may encounter a brief interruption of service between 5:00 and 6:00 p.m. (CDT). Services that will be affected include ASE, ListServe and the ATLA Websites. We apologize for any inconvenience and thank you for your patience.

New Survey of ATLA Members Be Sure to Participate

As you prepare to renew your membership for the coming year, your association wants to make sure that we are doing the best possible job of serving your needs. We have designed an important survey to help us better understand what those needs are.

An email including information and a link to the survey was sent out on Monday, April 19 by Director of Member Services Barbara Kemmis. All Individual, Student, and Lifetime Members as well as Institutional, International Institutional, and Affiliate Library Member Representatives should have received it. Be sure to check your email, and if you haven't received Barbara's message, please contact the Member Services Department.

Please complete the survey by May 28, 2010.

We welcome your submission of news, photos, and other items of interest for the *ATLA Newsletter*. All submissions are due on the first business day of the month preceding publication. Contact Sara Corkery (scorkery@atla.com) with any questions or concerns or if you are interested in sponsoring an issue of the newsletter.

Wabash Colloquy



From April 22 - 26, thirteen new theological librarians joined five staff for the third triennial Colloquy for Theological Librarians. Participants focused on four key areas:

1. Reflection on the distinctiveness of theological librarianship as a vocation and a profession.
2. Developing their role as educators and as partners with faculty and students in the task of theological scholarship.
3. Exploring the future of theological libraries, including the theological librarian's role in implementing change in educational practices related to the impact of new technologies, methods, resources, paradigms and trends on theological scholarship/librarianship.
4. Considering the collaborative nature of librarianship in theological education and to engage in a community of peers.

Leadership Team

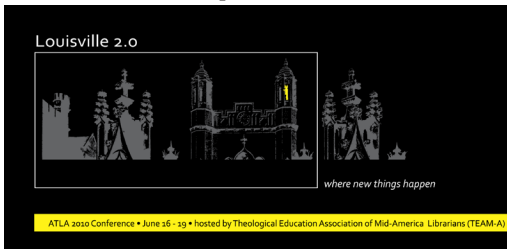
- Roger Loyd, Duke Divinity School, Director
- Amy Limpitlaw, Yale Divinity School
- Cait Kokolus, St. Charles Borromeo Seminary
- Dennis Norlin, American Theological Library Association
- Paul Myhre, Wabash Center

Participants

- Christopher Benda, Vanderbilt University
- Miranda Bennett, University of Houston
- Leland Deeds, Union Theological Seminary - PSCE
- Erica Durham, Columbia Theological Seminary
- Suzanne Estelle-Holmer, Yale Divinity School
- Lisa Gonzalez, Catholic Theological Union of Chicago
- Rebecca Miller, Trinity International University
- Elena Nipper, Vanguard University of Southern California
- Lorraine Olley, Univ of St. Mary of The Lake/ Mundelein Seminary
- Brad Ost, Clark Atlanta University
- Jared Porter, Asbury Theological Seminary
- Tracy Powell Iwaskow, Candler School of Theology - Emory University
- Lee Webb, Oklahoma City University

ATLA 2010 Annual Conference

News and Updates



We also welcome nine new exhibitors and three exhibitors who are returning after a few year's absence:

- Baylor University Press - publishes works in the areas of theology, biblical studies, religion and public life, and, more broadly, books with a moral arc.
- Christian Focus - a Christian publishing company of children's and adult books, whose aim is to impact the world by providing literature faithful to God's Word, the Bible.
- Copyright Clearance Center - an international licensing expert, they license the rights to millions of books, journals, newspapers, websites, ebooks, images, blogs and more. They will be displaying their annual copyright license for academia.
- Digital Commons - hosted by Berkeley Electronic Press, this is the world's leading open-access institutional repository platform, featuring an innovative suite of publishing and software services that empowers scholarly communities to showcase and share their works for maximum impact.
- Gorgias Press LLC - Gorgias Press is an independent academic publisher of books and journals covering several areas related to religious studies, the world of ancient western Asia, classics, and Middle Eastern studies.
- Mohr Siebeck - a German publishing house since the early 1800's, Mohr Siebeck will be exhibiting their new Early Christianity Journal, as well as other theological offerings.
- Oxford University Press - the world's largest and oldest continuously operating university press with an aim to publish works that further excellence in research, scholarship, and education. OUP produces Bibles of the highest quality for personal use, and study Bibles reflecting the best scholarship for university classes and individual instruction.
- Preservation Technologies - provides deacidification products and services for libraries, archives, and consumers worldwide. Their patented products are manufactured with the same level of care for the object, user, and environment.
- USAMadrid - distributes theology, biblical studies, and religion books and DVDs in Spanish.
- Wiley - an independent, global publisher that releases religion and theology titles under the Wiley-Blackwell imprint, and spirituality titles as Jossey-Bass.
- Windows Booksellers: Wipf and Stock Publishers - Windows buys and sells used theological books, and Wipf and Stock publishes and reprints academic books.
- Zondervan Academic - will exhibit new biblical and theological resources published under their imprint.

Exhibitors

As you make your final plans to join your fellow attendees in Louisville, be sure to check the conference website for updates. With over 45 tables representing 35 different exhibitors, you can plan your trip to the exhibit hall in advance by checking the handy list of exhibitors and the schedule of exhibit hall events at http://www.atla.com/member/conference/conf_2010/exhibitor_list.html

As always, ATLA thanks the generous sponsors whose support helps make the Annual Conference possible. This year's sponsors are:

Conference Sponsor

ATLA Products and Services

Major Sponsor

EBSCO Publishing

Supporters

BRILL

CBIZ

First Bank and Trust

OCLC Online Computer Library Center

Many popular exhibitors will be returning to the 2010 conference, including Abingdon Press, Association of Christian Librarians/Christian Periodical Index, Backstage Library Works, Baker Publishing Group, BRILL, Casalini Libri, David C. Lachman, De Gruyter NY, Digital Commons, EBSCO Publishing, Editorial Verbo Divino, Eisenbrauns, Fortress Press, IVP Academic, John Wiley & Sons, Inc., OCLC, Puvill Libros, Scarecrow Press, The Scholar's Choice, SIL International, Stroud Booksellers, Theological Book Network, and Westminster John Knox.

Visit the list on our website for the schedule of showcases and the most complete and up-to-date list of exhibitors and sponsors.

Invitation: Participate in the Conference Choir

The ATLA Singers, a small volunteer choir that sings at one of the conference worship services, will perform during worship service at Louisville Presbyterian Theological Seminary on Saturday morning, June 19. The choir is looking for new members to swell its ranks, particularly individuals with some choir experience, blending voices (and the technique to control vibrato, if any), and some ability to read music. The music is sent out to singers so that they have the

opportunity to learn it ahead of the limited rehearsal time at the conference. If you would like to join, please contact the choir director, Seth Kasten, at skasten@uts.columbia.edu. Past singers, please resubmit your name to insure that you'll receive the music ahead of time.

To listen to the choir at last year's service at Concordia University, visit the ATLA YouTube Channel at <http://www.youtube.com/ATLAone>

Early Bird Deadline

Mid-May is your last chance to enjoy \$50 savings on full conference registration fees. Be sure to register by May 14. And remember, it's not too late to sign up for the wonderful range of pre-conference workshops. Several of these valuable sessions still have space available.

Memorials and Retirees

Every year we take time at the annual conference to honor retiring members and to remember ATLA members who have died in the preceding twelve months.

This year's memorial service is scheduled for Saturday, following the worship service. If you are retiring or if you know of any ATLA members who have passed away since June 2009, please inform Barbara Kemmis, Director of Member Services, at bkemmis@atla.com.

Job Placement Services

A book of job openings submitted by employers will be available at the conference registration table. Job seekers will be welcome to look through the book and make mutually convenient arrangements to meet with the hiring employers. If you will be hiring at that time and want your position to appear in the book, please send your information to Denise McFarlin,

Meeting Specialist, at dmcfarlin@atla.com.

Member Loyalty Program-Free Conference Registrations

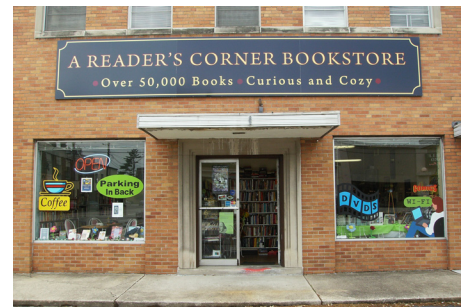
The American Theological Library Association is proud to support the Member Loyalty Program to thank our current Institutional, International Institutional, and Affiliate members for your involvement in ATLA as members and customers. 88 member libraries have registered and are sending 87 staff to Louisville.

During these challenging economic times, we hope this program will allow you to attend the upcoming 2010 Annual Conference if cost has been holding you back.

We have extended the member loyalty program registration until the conference to accommodate members who would like to attend and are managing tight budgets--all you need to do is complete the form available at <http://www.surveymonkey.com/s/HW52T7S>. Your registration will be confirmed and you will be invited at that time to redeem the loyalty benefit of your choice. Please note that loyalty benefits are not transferable.

As always, we appreciate your feedback. If you have any questions or comments, please contact Barbara Kemmis at 888/665-2852 or bkemmis@atla.com. Thank you for your dedication to ATLA as a member and as a subscriber. We are pleased to be able to provide you with a range of products and services.

So--don't wait! You can register for the conference, the sessions, and the excursions through the official conference website. http://www.atla.com/member/conference/conf_2010/conference_home.html



Local Host Update Independent Bookstores in the 'Ville

We hope that you have registered and are making your plans to come to Louisville. After you've exhausted all of the book options in the exhibit hall during the conference, you may want to venture out into the city to find a bookstore or two. We're here to help.

Right next to the hotel is the downtown entertainment district known as 4th Street Live. (It is about a block from the hotel.) The major anchor to that is a Borders. I'm sure some of you will want to stop by their place. Others may want the local independent experience, and so I've posted some links on the FB event to help you find a couple of the leading local new and used bookstores. Not listed (because they don't have a website) is the Christian Book Nook, which is happily located next to one of the best coffee shops (Sunergos) and bakeries (Nords). Carmichaels and Reader's Corner (photo above) have their own strengths, so check out the links.

We know too that some of you may chronically or periodically suffer from ITHAGT (Inability To Have A Good Time). Louisville is a great city to remedy that as this video shows. <http://www.youtube.com/watch?v=iSha0Za4ERA&feature=related>

Best, Bruce Kiesling

OCLC and ATLA Announce Partnership

OCLC is pleased to welcome ATLA as the newest partner in the OCLC Partnership Program. As Partners, OCLC and ATLA will collaborate on programs and activities to enhance services and expand educational opportunities to members of both organizations. ATLA and OCLC have an extensive history of working together on initiatives such as the Jay Jordan IFLA/OCLC Early Career Development Fellowship Program, group services and electronic content offerings. This new partnership formalizes the work already under way and extends the opportunity to explore new ways to anticipate and address the needs of our shared members.

"We're excited about the opportunities this partnership with OCLC means for our members," said Dennis Norlin, ATLA Executive Director. "By collaborating more closely with OCLC, ATLA members will have increased access to education and training opportunities, and greater connections to the benefits of the OCLC cooperative."

"Together with our Partners we're able to create innovative programming, and learn more about the challenges and opportunities facing our members," said Cathy De Rosa, OCLC Vice President, Global Marketing. "As the community of OCLC Partners grows, the collaborative programs and services we deliver together will allow members to take full advantage of current technologies that can improve cost efficiencies. We're very pleased to welcome ATLA as our newest Partner in the OCLC Partnership Program."

The OCLC Partner Program brings value-added services to OCLC member institutions through the development of strategic partnerships with library consortia, groups, networks and other membership organizations. OCLC and its Partners work together to strengthen member relationships and develop programs and services to serve the needs of shared members. For more information about the OCLC Partner Program, or to learn more about becoming an OCLC Partner to deliver new service options or training to members, contact OCLC at partnerships@oclc.org.

About OCLC

Founded in 1967, OCLC is a nonprofit, membership, computer library service and research organization dedicated to the public purposes of furthering access to the world's information and reducing library costs. More than 72,000 libraries in 171 countries have used OCLC services to locate, acquire, catalog, lend, preserve and manage library materials. Researchers, students, faculty, scholars, professional librarians and other information seekers use OCLC services to obtain bibliographic, abstract and full-text information when and where they need it. OCLC and its member libraries cooperatively produce and maintain WorldCat, the world's largest online database for discovery of library resources. Search WorldCat on the Web at <http://www.worldcat.org>. For more information, visit <http://www.oclc.org>.

About ATLA

Established in 1946, ATLA is a professional association of more than 1,000 individual, institutional, and affiliate members providing programs, products, and services in support of theological and religious studies libraries and librarians. ATLA's ecumenical membership represents many religious traditions and denominations. For more information visit <http://www.atla.com>.

Have You Heard?

Leadership Institute Announced

From June 5 through June 9, Seton Hall University will be presenting a Leadership Institute for Academic Librarians in Catholic Institutions. Taking place on the university's main campus in South Orange, NJ, the Institute is co-sponsored by the Catholic Library Association. The program is designed for college and university librarians, especially those working in Catholic and faith-based institutions. For more information, visit <http://www.shu.edu/go/libraryleadership>.

Remembering Veta Campbell

1946-2010



Veta CampbellLaVeta Campbell died on April 19, 2010, of sarcoidosis and pneumonia, in Upland, California. Her husband, Jerry D. Campbell, was a member of ATLA for many years and served as president in 1981-82; he is currently the president of Claremont School of Theology. For more information, including a memorial fund established by Claremont, see <http://www.forveta.blogspot.com>.

-Roger Loyd, Duke Divinity School Library

From the Special Committee of the Association for Diversity



LEEP Scholarships

This is a reminder that applications are now being accepted for the Scholarship to Promote Diversity in Theological Librarianship to attend the University of Illinois at Urbana-Champaign LEEP course, Theological Librarianship (LIS 590TL). The committee is offering

up to three \$1,200 scholarships to students from underrepresented minority populations and the prospective student must be an ATLA member in good standing. Applications will be accepted until June 1, 2010 and can be addressed to memberrep@atla.com. For more information about eligibility and the application process please visit http://www.atla.com/member/awards_grants_scholarships/grants_diversity.html.

Instruction for Theological Librarianship begins August 25, 2010. The class meets asynchronously but there is a required synchronous live session from 4 pm to 6 pm each Wednesday, from August 25 through December 8, excluding Thanksgiving. For information about registration, students should contact Linda C. Smith, lcsmith@illinois.edu, or Rae-Anne Montague, rae@illinois.edu, at the Graduate School of Library and Information Science, Univ. of Illinois Urbana /Champaign. Students who are ATLA members pay in-state tuition.

I urge all of you to encourage any of your staff who might be interested and are eligible to consider applying for the scholarship.

Rachel Santos, a student in the last session, says "As a reference librarian in a large public library system with a strong interest in religious/theological studies the chance to participate in a class that combines my two loves was an unbelievable opportunity. I felt like I struck librarian gold! This course introduced me to the language, tools and experience of the theological library in a welcoming, encouraging environment. In an online situation, there's always the potential for the detachment that can happen in a 'people free' environment. But the live interviews and interactions with the other students contributed to the feeling of community. I felt connected to the materials, the professor, the guest speakers and my classmates throughout the course."

As a member of the 2005 class, I can also attest to the value of taking this class.

2010 Conference Programming

The Special Committee on Diversity of the ATLA is sponsoring two programs which I hope you will plan to attend. A panel discussion entitled "The New Face of Theological Education" featuring Mayra Picos-Lee, Bibliographic and Counseling Instructor, Palmer Theological Seminary; Tammy Johnson, Technical Services Librarian, Columbia Theological Seminary; Lorna Shoemaker: Director of the Library, Christian Theological Seminary; Eileen Saner, Librarian and Director of Educational Resources, Associated Mennonite Biblical Seminary.

Each member of the panel will answer the following questions in their remarks: Why did my institution decide to address diversity? How did they go about it? How has it changed the enrollment pattern? How is the library involved? The panel is offered on Saturday, June 19 from 11:30am-1pm. Please come and participate in the discussion.

On Thursday, June 17, from 7:30-10pm, the Special Committee on Diversity is having the first-ever Movie Night. Popcorn and soda will be served. We will view "Pieces of April" (PG-13), <http://www.imdb.com/title/tt0311648/>, and discuss its issues and themes relating to diversity and their connections in a relaxing atmosphere. Come and join us for a fun evening.

See you in Louisville.

- Diana Brice, Chair



ATLA Newsletter Contact Information:
Sara Corkery, Communications Specialist
scorkery@atla.com • 888.665.2852

From the Board of Directors: To What End(s)?

At the Board of Directors meeting in mid-January, a major revision of ATLA's Organizational Ends was adopted. This was the End result (no pun intended) of a lengthy and careful process, guided by the Board's Policy Governance Committee.

What does this mean? And why does it matter?

Before answering the first question, a personal disclaimer: prior to becoming a Board member in June 2005, I had only the vaguest idea of what ATLA's Organizational Ends were. And I can't say that my participation as a member of ATLA was inhibited in any specific way by this oversight. However, one of the essentials of being a board member is to possess a clear sense both of why ATLA exists and of what processes and structures are in place for the Board to help keep ATLA on target.

This is where Organizational Ends come into play: for many years, ATLA's board has chosen to work under the Policy Governance model (<http://www.carvergovernance.com/model.htm>). One of the model's hallmarks is a separation of issues of organizational purpose (Ends) from all other organizational issues (Means), placing primary importance on those Ends.

These Ends are therefore absolutely integral to the vitality of the association, to the evaluation of leadership, and to the effectiveness of the Board of Directors. ATLA's existing Ends have been in place for more than a decade. Much has changed, both inside of ATLA and in the surrounding environment, during that stretch of time. As the Board endeavored to become more adroit in its use of the Policy Governance model (establishing a Policy Governance Committee, sending two board members to Policy Governance workshops during each of the past 3 years, etc.) it became evident that a review of the Ends was in order. Significant time and energy has been devoted to this revision process, including an entire separate Board meeting in October 2008.

As to the second question, the adoption of revised Ends is one important indication that ATLA's Board is engaging its work seriously, paying sustained attention at the highest level to what the association's purpose is in a rapidly changing environment, and to what are the best ways of fulfilling that purpose.

The newly adopted Ends read as follows, beginning with ATLA's overarching or "global" End:

Libraries and librarians are effective and valued partners in the academic study of religion, theology and ministry.

(Subsidiary Ends 1 and 2 are in ranked order. Below that level, the Ends are increasingly specific elaborations, numbered to indicate their

relationship to 1 and 2. The ranking of the Ends does not dictate the proportion of resources allocated.)

1. There is a continuing, prepared, and diverse complement of librarians.

1.1 Librarians are equipped to envision, implement, and advocate for the role of the library in their institutions.

1.1.1 Programming addresses the various career stages and specializations of members, enabling them to broaden knowledge, abilities, and skills, address challenges, and find greater satisfaction at work.

1.1.2 Potential theological and religious studies librarians are assisted in pursuing the profession.

1.2 ATLA and its members sustain collegial relationships with librarians, libraries, and appropriate organizations locally, regionally, and throughout the world.

1.3 ATLA reflects the diversity of our communities and institutions, including but not limited to religious, racial, ethnic, and gender diversities.

1.3.1 Individuals from under-represented racial and ethnic minority communities are welcomed as members of the association and are encouraged to hold leadership roles.

2. Primary source material and scholarly resources for the study of religion and theology are organized, preserved and made accessible at a reasonable expenditure of funds, time, and resources.

2.1 Excellent research tools supporting the study of religion and theology are created to meet the needs of libraries, librarians, scholars, students, clergy and laypeople.

2.1.1 Research and development initiatives successfully address needs for improved and new products and services.

2.2 Theological and religious studies librarians collaborate to develop solutions to information-related problems common to their libraries and collections.

This concise overview of a process that has required a lot of hard work might be - who knows? - all you need to know. But as a Board we will make sure to refer to it during our Business Meeting in Louisville, and your questions are certainly welcome.

All the best,

David R. Stewart, President

2010 IFLA/OCLC Fellows Visit ATLA Office

On Monday, April 26, several members of ATLA's staff met with librarians from six different countries. Participants in the Early Career Development Fellowship Program, these librarians visited ATLA headquarters as part of their two-week stay in the United States. Jointly sponsored by OCLC and IFLA, the program offers early career librarians an opportunity to sample a variety of library and information science sites and to make connections with their American counterparts.



Standing, left to right: Miss Sidra Shan (Pakistan), Miss Sasekea Harris (Jamaica), and this year's ATLA Fellow (and inset), Ms. Catherine Muriuki, (Kenya); Seated: Miss Shao Yan (China), Mr. Mahmoud Khalifa (Egypt), and Mr. Elchin Mammadov (Azerbaijan).

For more information about the Fellows and the program, go to <http://www.oclc.org/community/careerdevelopment/fellows/default.htm>.

ATLA Calendar

May

- 1 Submissions for June/July ATLA Newsletter due on first business day of this month
- 14 Early Bird deadline for ATLA 2010 Annual Conference Registration
- 17 Housing Registration deadline for ATLA 2010 Annual Conference
- 31 ATLA office closed for Memorial Day holiday

June

- 16-19 ATLA 2010 Annual Conference in Louisville, Kentucky

July

- 1 Submissions for inclusion in August ATLA Newsletter due on first business day of this month
- 4-7 Barbara Kemmis at Association of Jewish Libraries Convention
- 5 ATLA office closed for Independence Day holiday
- 10 Submissions due for Summary of Proceedings for the ATLA Sixty-fourth Annual Conference